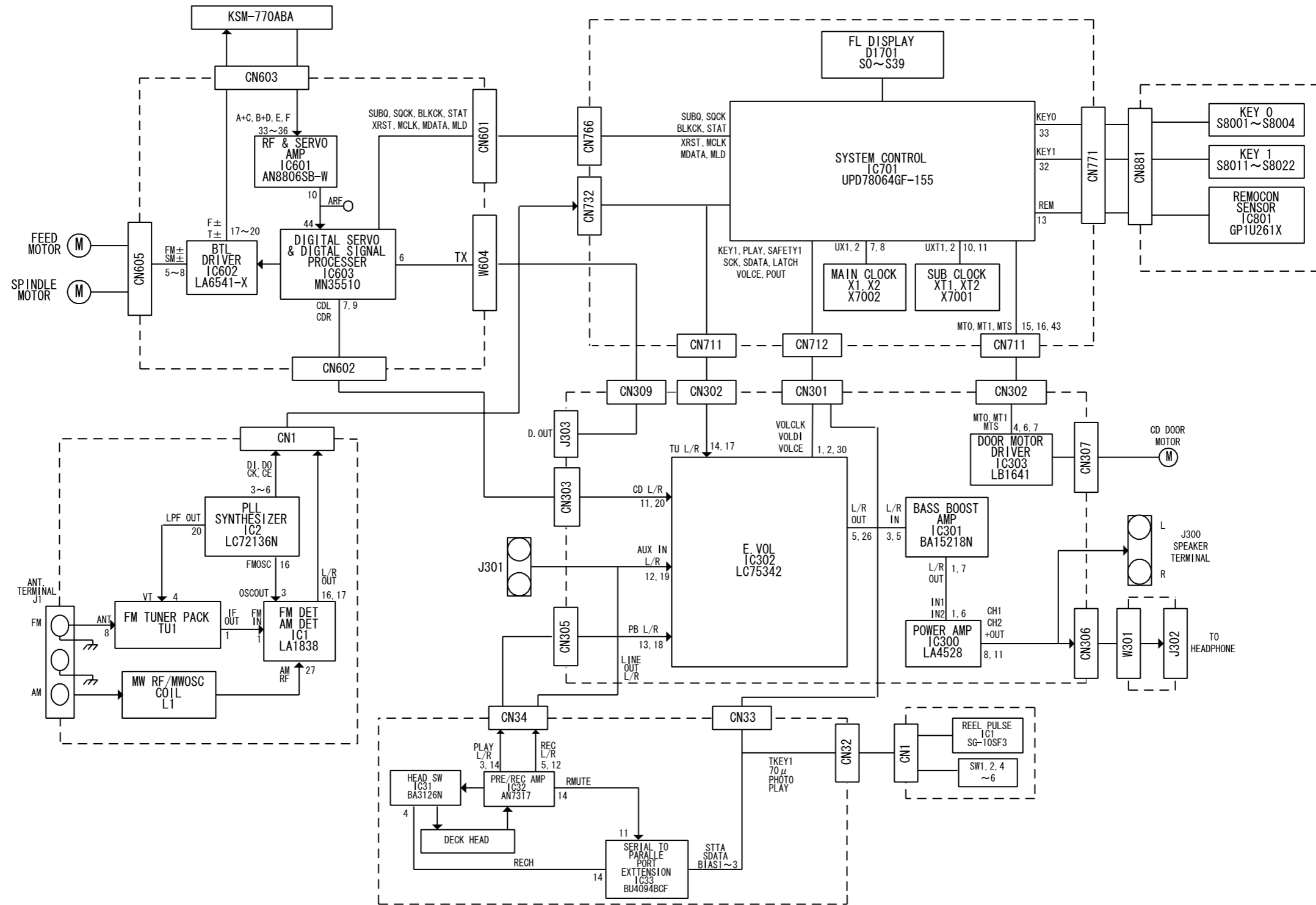
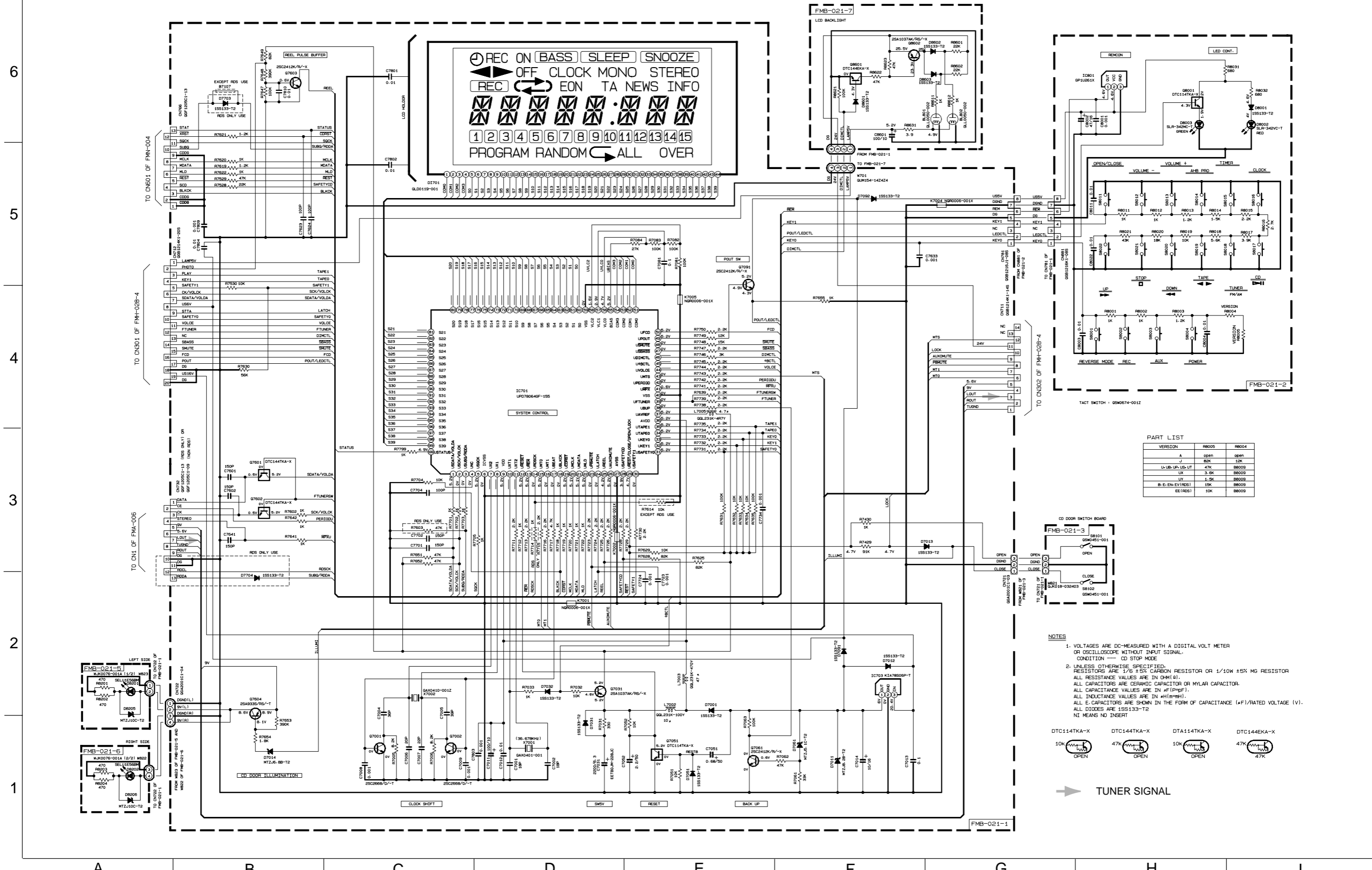


Block diagram



Standard schematic diagrams

■ CPU & LCD driver circuit



PART LIST

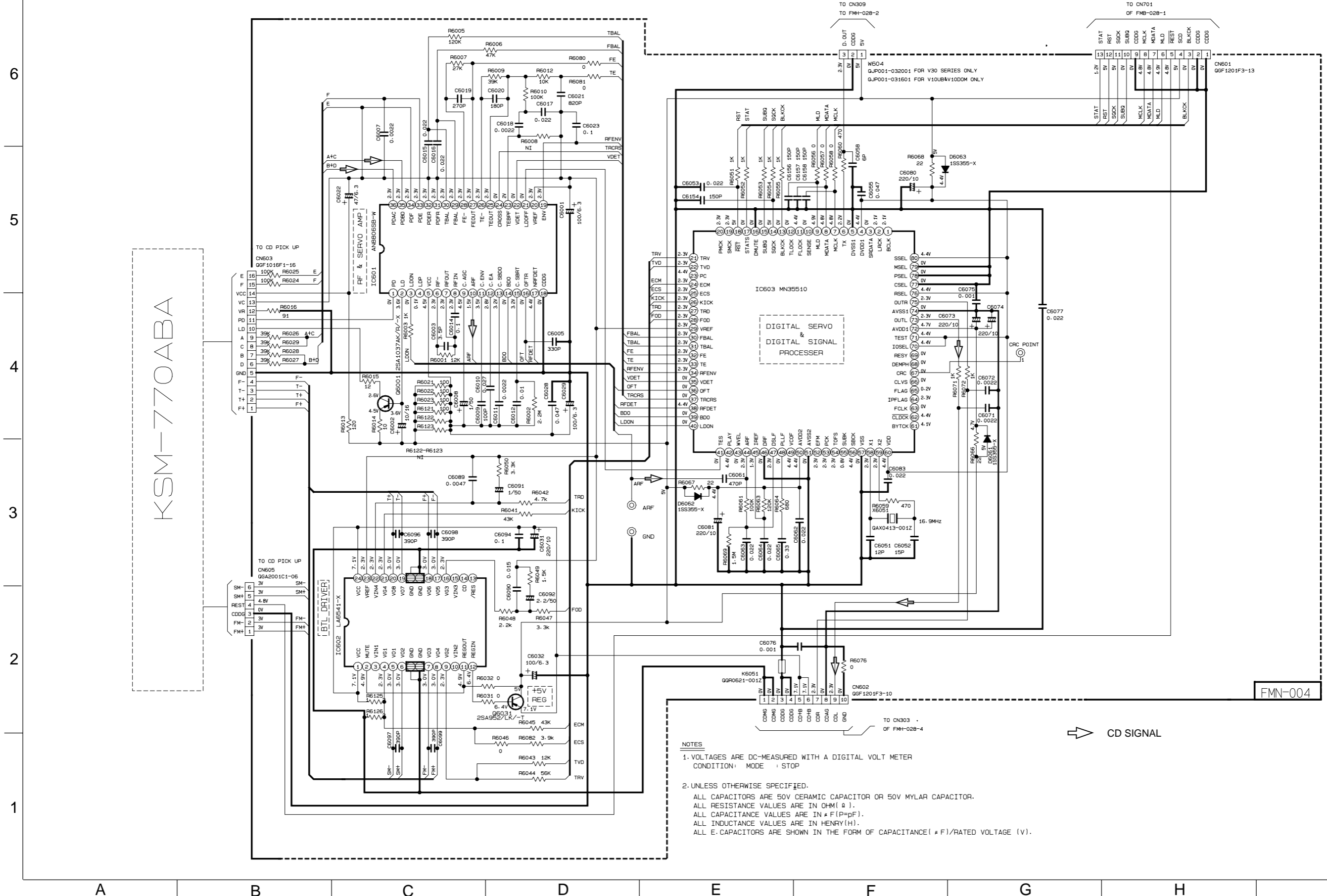
VERSION	R8005	R8004
A	open	open
J	80K	10K
U-LB, LB, LB-UT	47K	88009
U	3.3K	88009
UV	1.5K	88009
B-E, EN, EV (R801)	15K	88009
EE (R80)	10K	88009

- NOTES**
- VOLTAGES ARE DC-MEASURED WITH A DIGITAL VOLT METER OR OSCILLOSCOPE WITHOUT INPUT SIGNAL. CONDITION — CD STOP MODE
 - UNLESS OTHERWISE SPECIFIED, RESISTORS ARE 1/6 ± 5% CARBON RESISTOR OR 1/10W ± 5% MG RESISTOR. ALL RESISTANCE VALUES ARE IN OHM (Ω). ALL CAPACITORS ARE CERAMIC CAPACITOR OR MYLAR CAPACITOR. ALL CAPACITANCE VALUES ARE IN pF (pF). ALL INDUCTANCE VALUES ARE IN mH (mH). ALL E-CAPACITORS ARE SHOWN IN THE FORM OF CAPACITANCE (μF)/RATED VOLTAGE (V). ALL DIODES ARE 1SS133-T2. NI MEANS NO INSERT



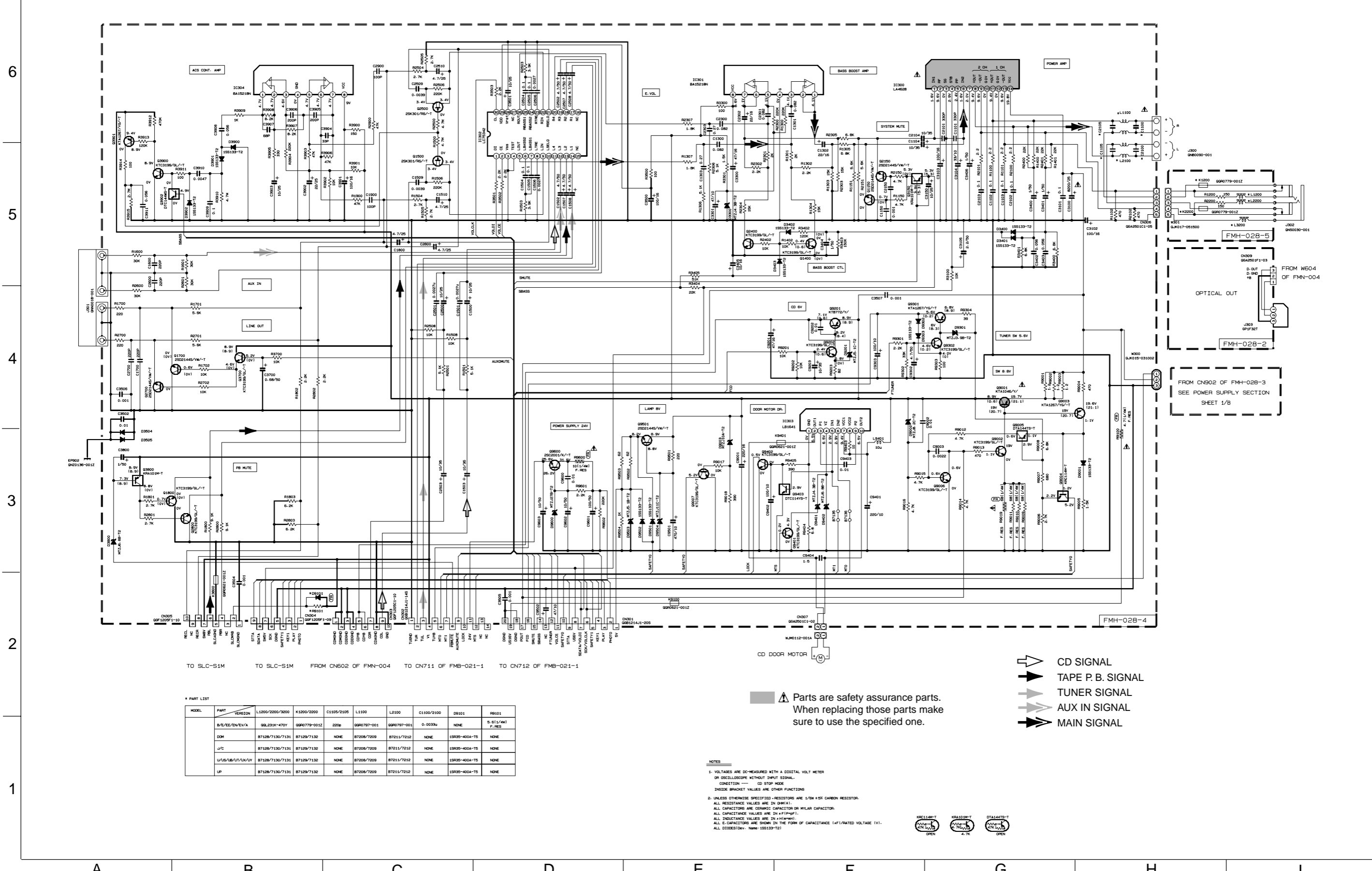
TUNER SIGNAL

■ CD servo circuit



- NOTES**
1. VOLTAGES ARE DC-MEASURED WITH A DIGITAL VOLT METER
CONDITION: MODE : STOP
 2. UNLESS OTHERWISE SPECIFIED.
ALL CAPACITORS ARE 50V CERAMIC CAPACITOR OR 50V MYLAR CAPACITOR.
ALL RESISTANCE VALUES ARE IN OHM (Ω).
ALL CAPACITANCE VALUES ARE IN PICO (pF).
ALL INDUCTANCE VALUES ARE IN HENRY (H).
ALL E-CAPACITORS ARE SHOWN IN THE FORM OF CAPACITANCE (μF)/RATED VOLTAGE (V).

Power amplifier circuit



TO SLC-S1M TO SLC-S1M FROM CN602 OF FMN-004 TO CN711 OF FMB-021-1 TO CN712 OF FMB-021-1

* PART LIST

MODEL	PART	VERSION	L1800/2000/3000	K1800/2000	C1105/2105	L1100	L2100	C1100/2100	D9101	R9101
B/E/EE/EN/EA/VA	Q9L231K-470Y	Q9P0779-001Z	2206	Q9P0797-001	Q9P0797-001	0-0033u	NONE	5.011/4M1	F.HES	
DM	87128/7130/7131	87129/7132	NONE	87208/7209	87211/7212	NONE	15R35-400A-T5	NONE	NONE	
J/C	87128/7130/7131	87129/7132	NONE	87208/7209	87211/7212	NONE	15R35-400A-T5	NONE	NONE	
U/S/UB/UT/AU/UV	87128/7130/7131	87129/7132	NONE	87208/7209	87211/7212	NONE	15R35-400A-T5	NONE	NONE	
LP	87128/7130/7131	87129/7132	NONE	87208/7209	87211/7212	NONE	15R35-400A-T5	NONE	NONE	

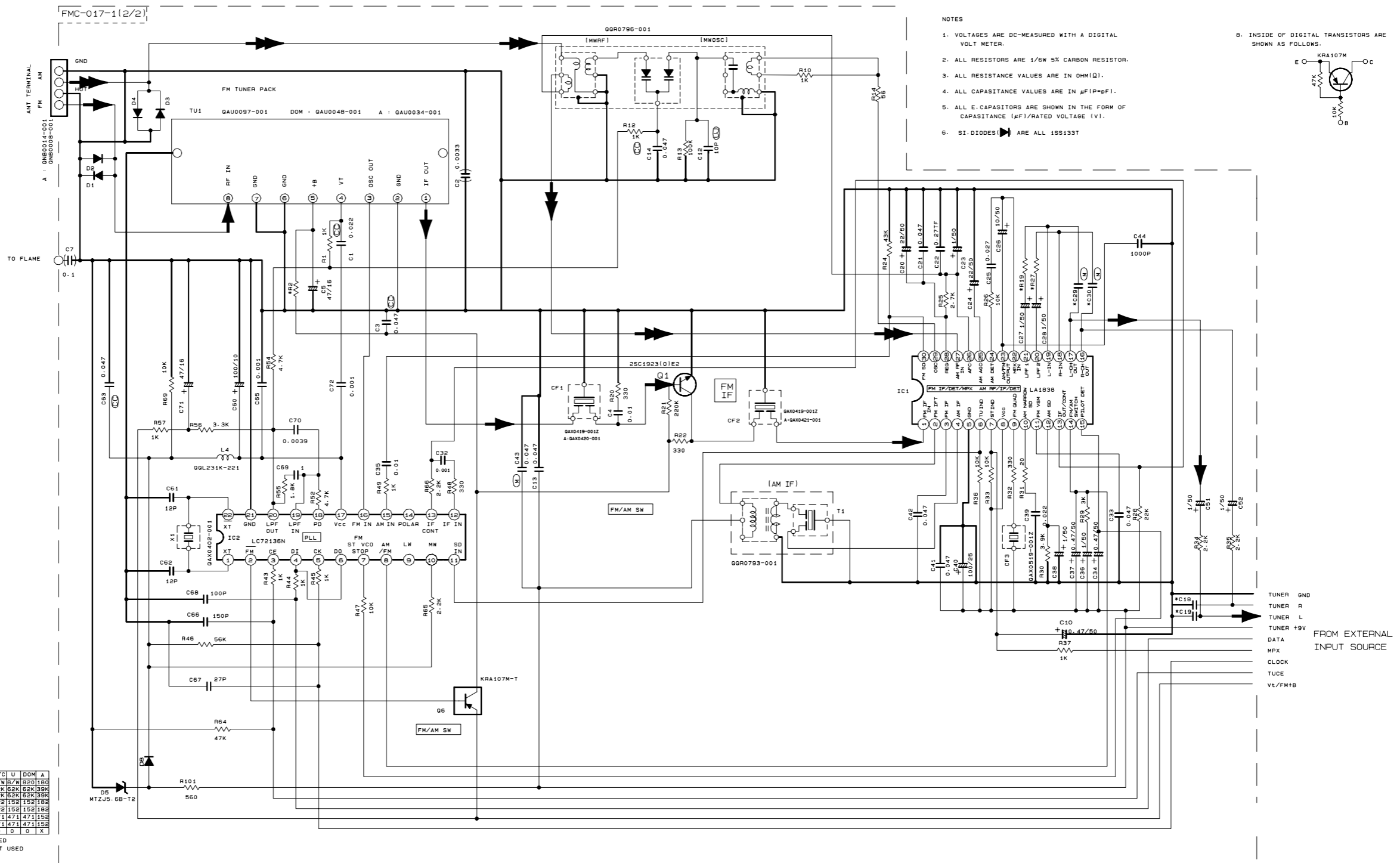
NOTES
 1. VOLTAGES ARE DC-MEASURED WITH A DIGITAL VOLT METER OR OSCILLOSCOPE WITHOUT INPUT SIGNAL.
 CONDITION — CD STOP MODE
 INSIDE BRACKET VALUES ARE OTHER FUNCTIONS
 2. UNLESS OTHERWISE SPECIFIED, RESISTORS ARE 1/8W ±5% CARBON RESISTOR.
 ALL RESISTANCE VALUES ARE IN OHMS (Ω).
 ALL CAPACITANCE VALUES ARE IN pF (pF).
 ALL INDUCTANCE VALUES ARE IN mH (mH).
 ALL E-CAPACITORS ARE SHOWN IN THE FORM OF CAPACITANCE (μF)/RATED VOLTAGE (V).
 ALL DIODES (Dev. Name: 1S9133-T2)



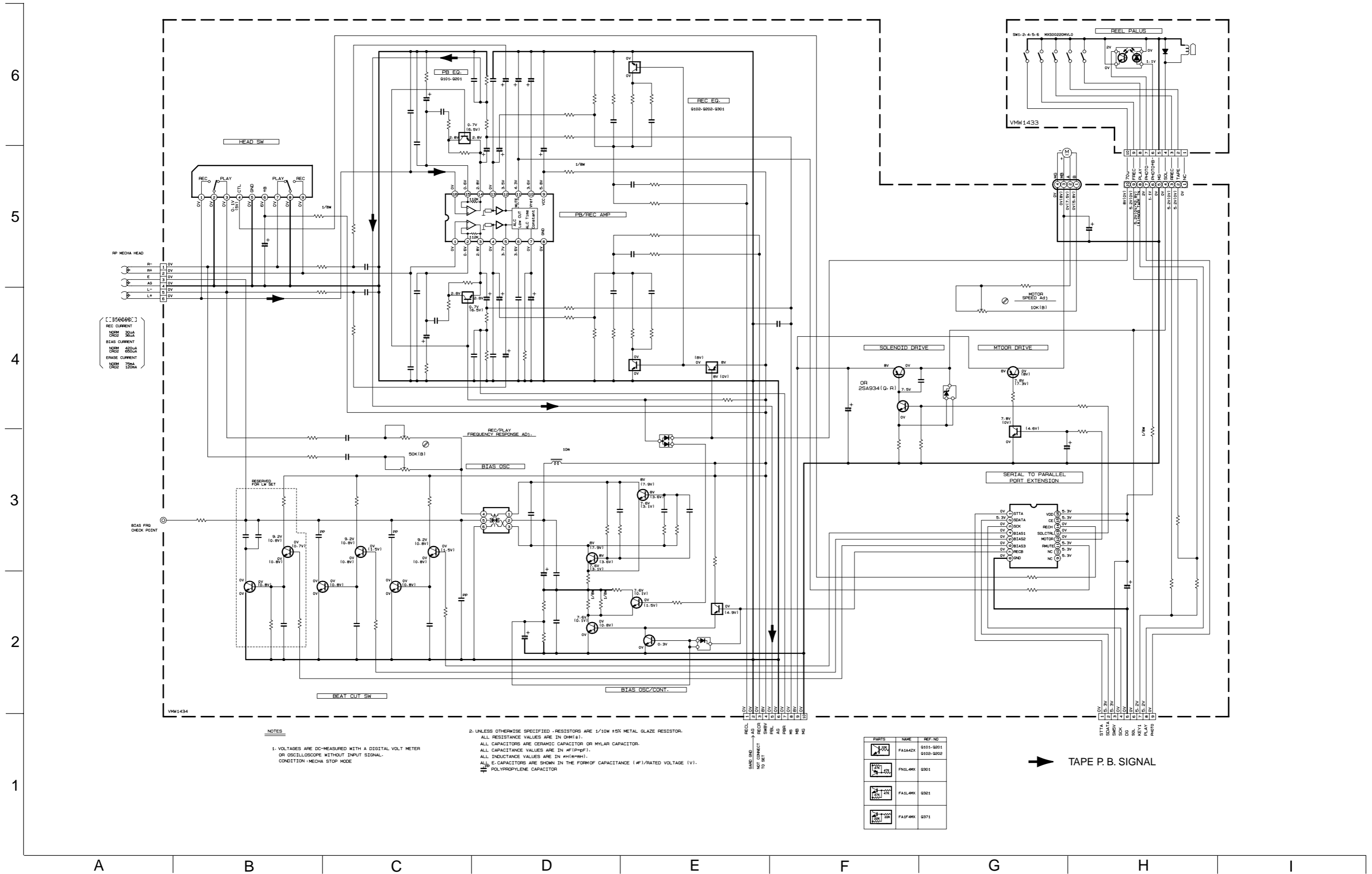
- CD SIGNAL
- TAPE P. B. SIGNAL
- TUNER SIGNAL
- AUX IN SIGNAL
- MAIN SIGNAL

⚠ Parts are safety assurance parts.
 When replacing those parts make sure to use the specified one.

■ Tuner circuit



■ Cassette mecha control circuit



NOTES
1. VOLTAGES ARE DC-MEASURED WITH A DIGITAL VOLT METER OR OSCILLOSCOPE WITHOUT INPUT SIGNAL. CONDITION : MECHA STOP MODE

2. UNLESS OTHERWISE SPECIFIED - RESISTORS ARE 1/10W ±5% METAL GLAZE RESISTOR. ALL RESISTANCE VALUES ARE IN OHM(Ω). ALL CAPACITORS ARE CERAMIC CAPACITOR OR MYLAR CAPACITOR. ALL CAPACITANCE VALUES ARE IN #F(#PF). ALL INDUCTANCE VALUES ARE IN #H(#MH). ALL E-CAPACITORS ARE SHOWN IN THE FORM OF CAPACITANCE (#F)/RATED VOLTAGE (V). POLYPROPYLENE CAPACITOR

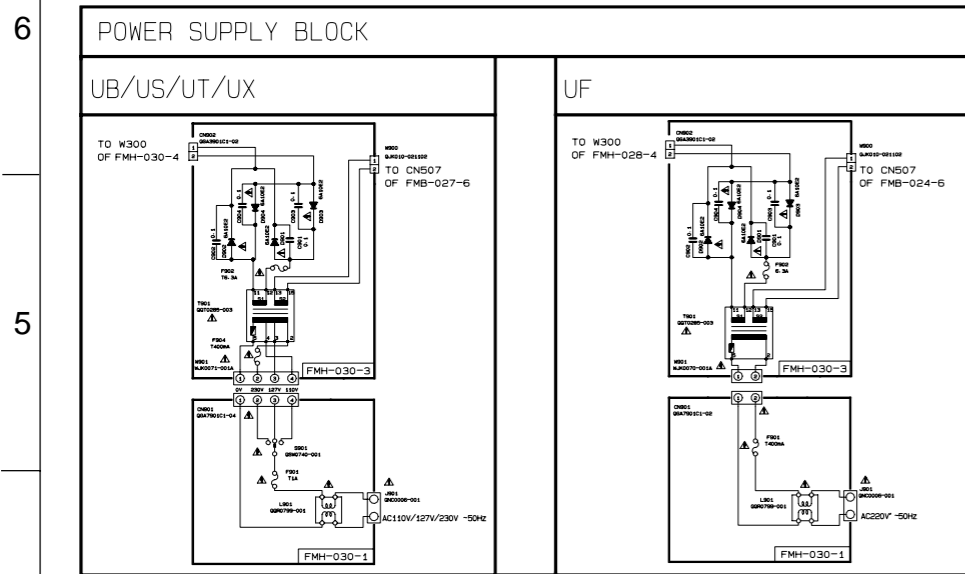
PARTS	NAME	REF. NO
	F1A14Z1	0101-0201
	F1A14Z2	0102-0202
	F1A14R1	0301
	F1A14R2	0302
	F1A14R3	0303

➔ TAPE P. B. SIGNAL

Power supply circuit

Video CD circuit

VCD circuit



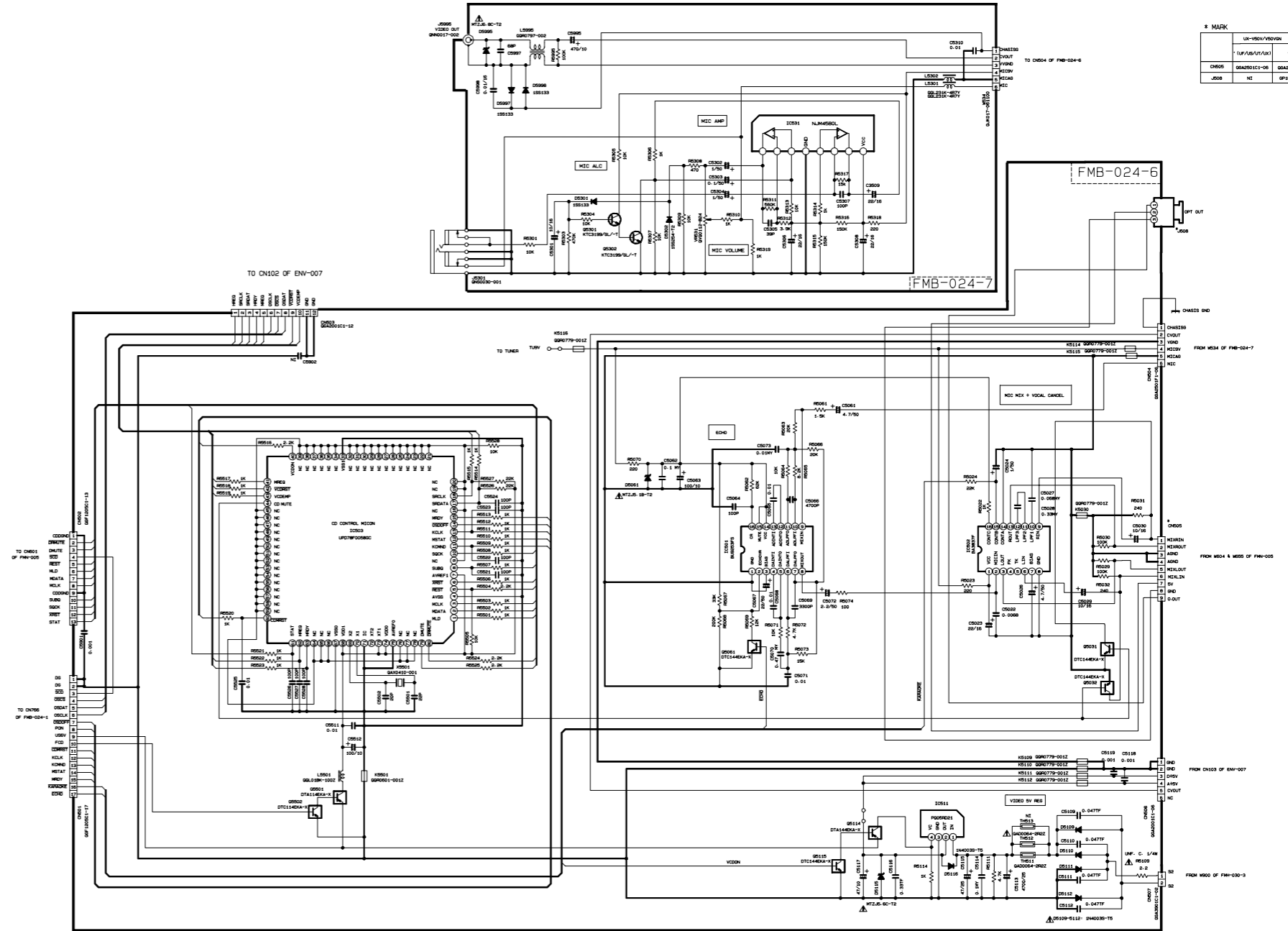
EXPLANATION OF OVERALL OF SCHEMATIC

SHEET NUMBER	MODEL NUMBER TO BE APPLIED	CIRCUIT DESCRIPTION
1/8	UX-V50GN/UX-V50V	PRIMARY WITH MAINS TRANSFORMER
2/8	UX-V50GN/UX-V50V	DC REGULATORS/AUXILIARY OUTPUT EXTERNAL INPUT SOURCE SELECTOR SWITCH
3/8	UX-V50GN/UX-V50V	LED DISPLAY/SYSTEM CONTROL/ABSEN KEY CONTROL
4/8	UX-V50GN/UX-V50V	CD SERVO AND CD SYSTEM CONTROL CD CHANGER MECHANISM CONTROL
5/8	UX-V50GN/UX-V50V	TAPE DECK MECHANISM CONTROL TAPE CIRCUITS SUCH AS PRE-AMP AND BIAS
6/8	UX-V50GN/UX-V50V	TUNER RF/IF/FM MULTIPLEX
7/8	UX-V50GN/UX-V50V	MIC AMP., ECHO, MIC MIX CIRCUIT CD CONTROL MECH. CIRCUIT
8/8	UX-V50GN/UX-V50V	VIDEO CONTROL CIRCUIT

NOTE: MARK(+) IS TO SHOW DEVIATION IN VERSIONS. DETAILS ARE EXPLAINED NEAR MARK.

VERSION CODES

UT	TAIPEI
UX	SEIKO ARABIA
US	USA
UP	CHINA
UB	HONG KONG
US	SINGAPORE AND UNIVERSAL EXCEPT ALL OF ABOVE



NOTES: 1. VOLTAGES ARE DC-MEASURED WITH A DIGITAL VOLT METER OR OSCILLOSCOPE WITHOUT INPUT SIGNAL. 2. UNLESS OTHERWISE SPECIFIED, ALL RESISTORS ARE 1/10W 45°C METAL GLAZE RESISTOR. ALL CAPACITORS ARE CERAMIC CAPACITOR OR NYLAR CAPACITOR. ALL RESISTANCE VALUES ARE IN OHMS(Ω). ALL CAPACITANCE VALUES ARE IN PICO(F) (PF). ALL INDUCTANCE VALUES ARE IN MILLI(MH) (MH). ALL E-CAPACITORS ARE SHOWN IN THE FORM OF CAPACITANCE (PF)/RATED VOLTAGE (V).

MARK

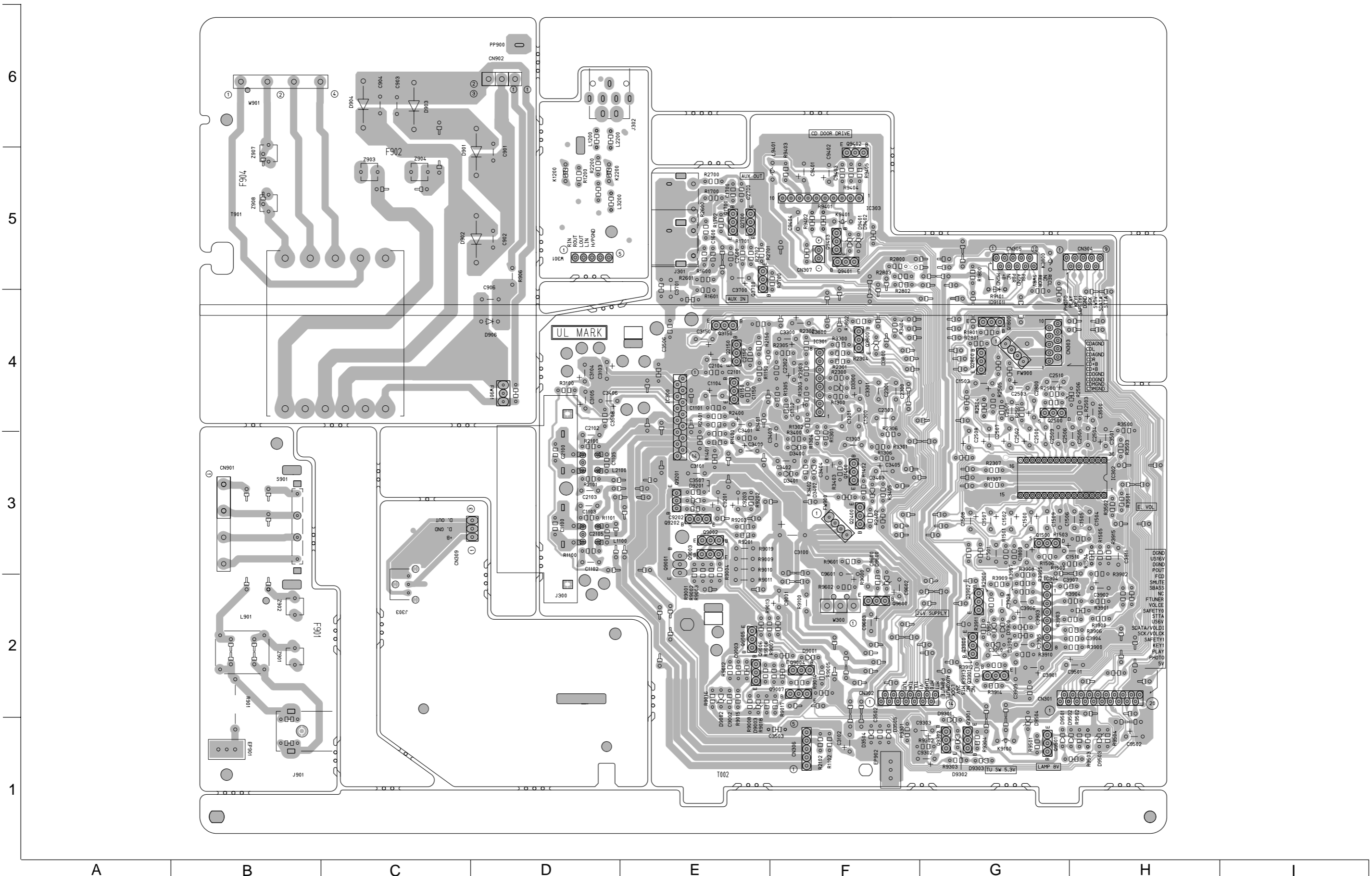
UX-V50V/UX-V50GN	(1) (1)
UX-V50GN/UX-V50V	(1) (1)
UX-V50GN/UX-V50V	(1) (1)
UX-V50GN/UX-V50V	(1) (1)

6
5
4
3
2
1

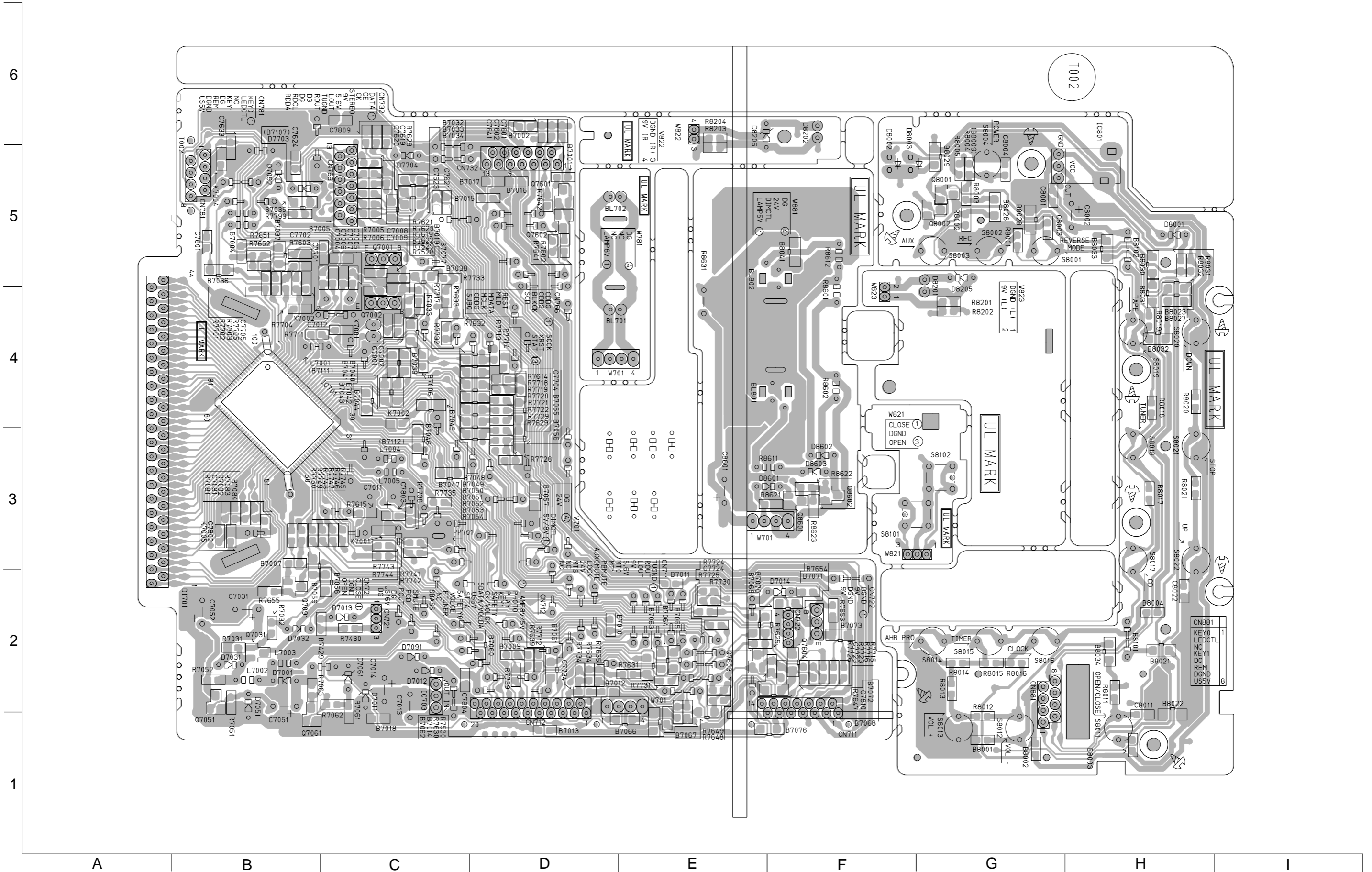
A B C D E F G H I

Printed circuit boards

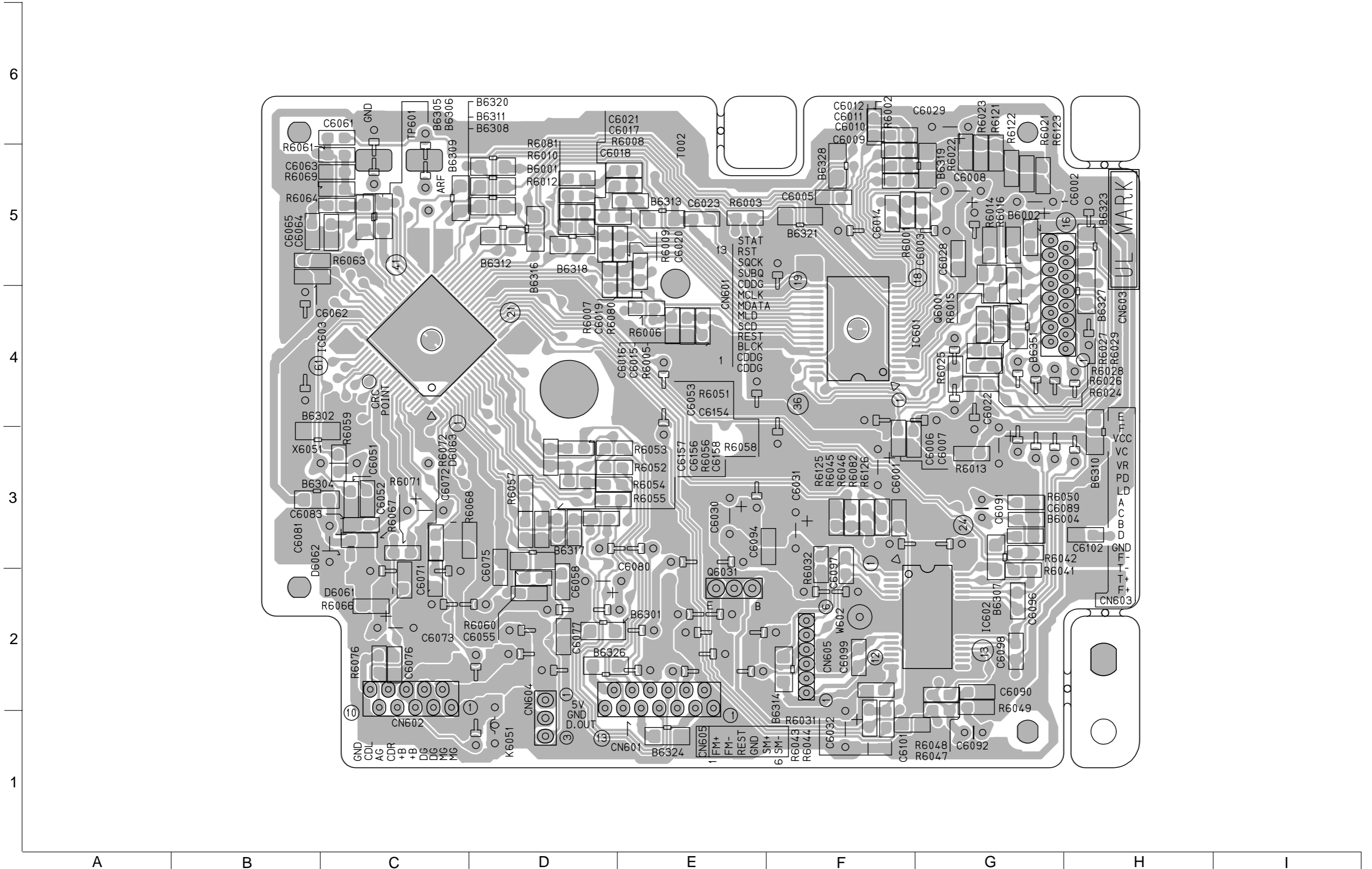
■ Main board



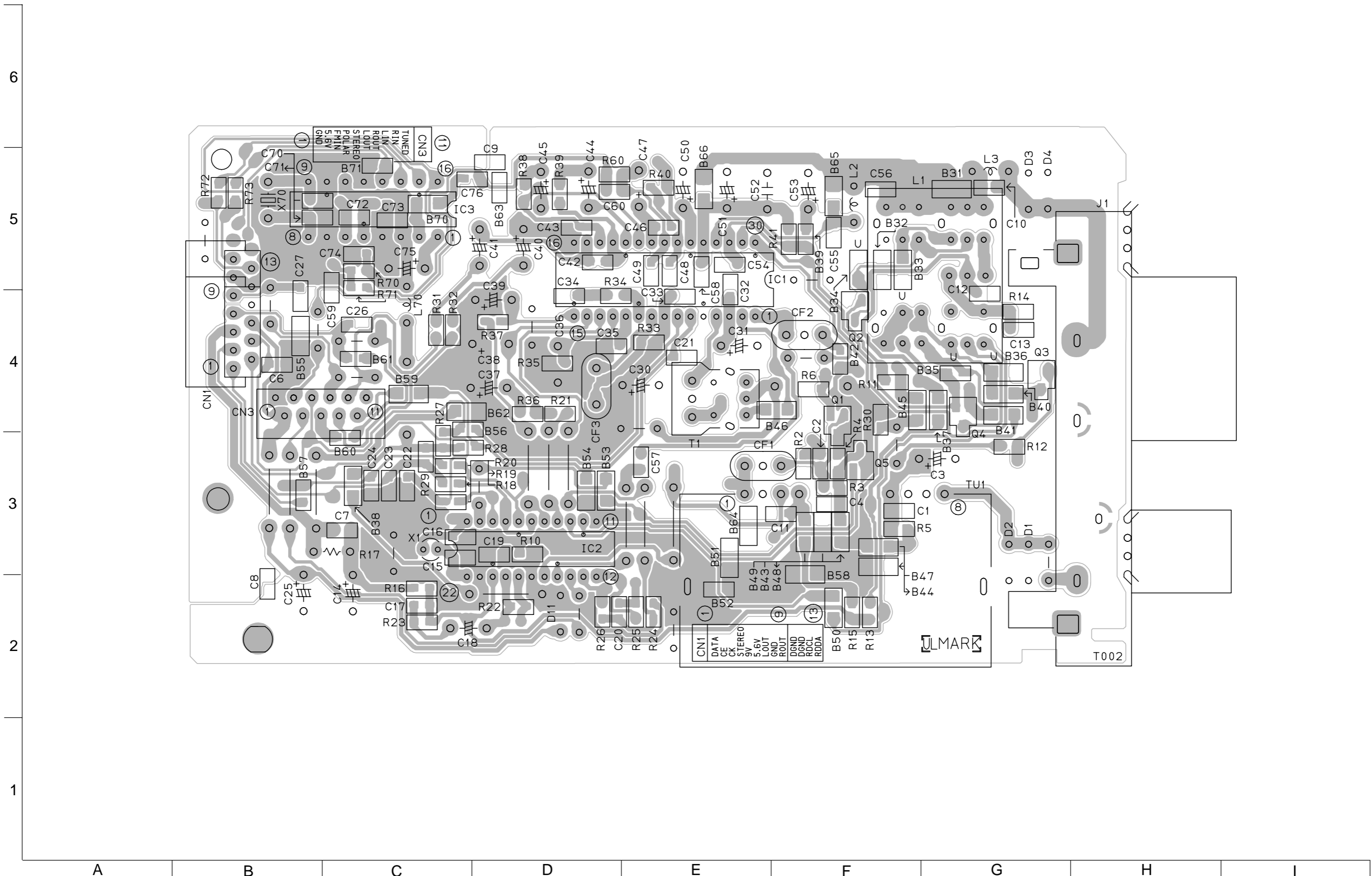
■ Micon P. C. board



■ CD board



■ Tuner P.W. B



UX-V50V
UX-V50GN

UX-V50V
UX-V50GN